



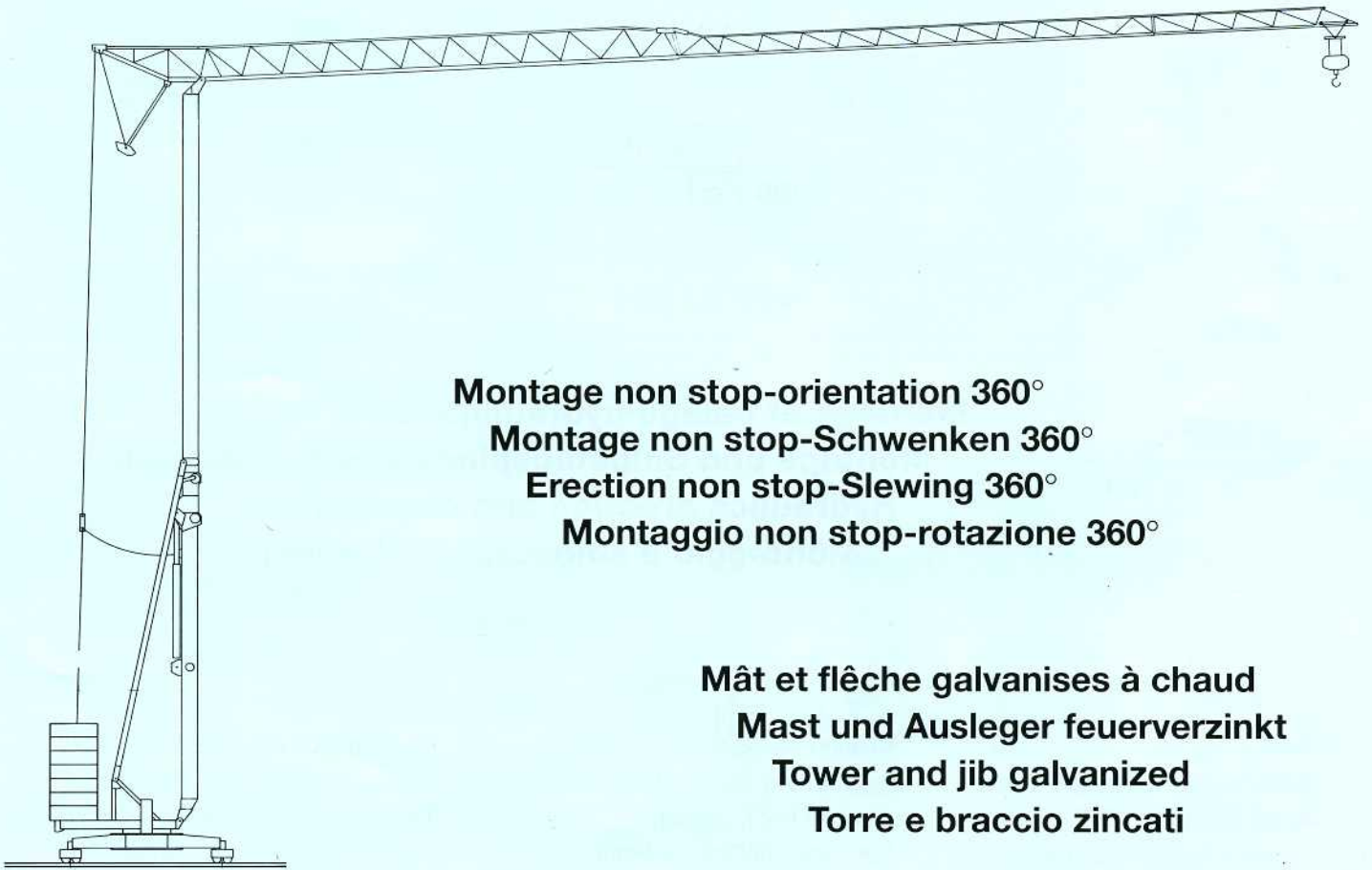
edilgru spa

edilgru international s.r.l.

Via Genala n. 48

26015 SORESINA (CR)

Partita I.V.A.: 01120880198



Montage non stop-orientation 360°

Montage non stop-Schwenken 360°

Erection non stop-Slewing 360°

Montaggio non stop-rotazione 360°

Mât et flèche galvanisés à chaud

Mast und Ausleger feuerverzinkt

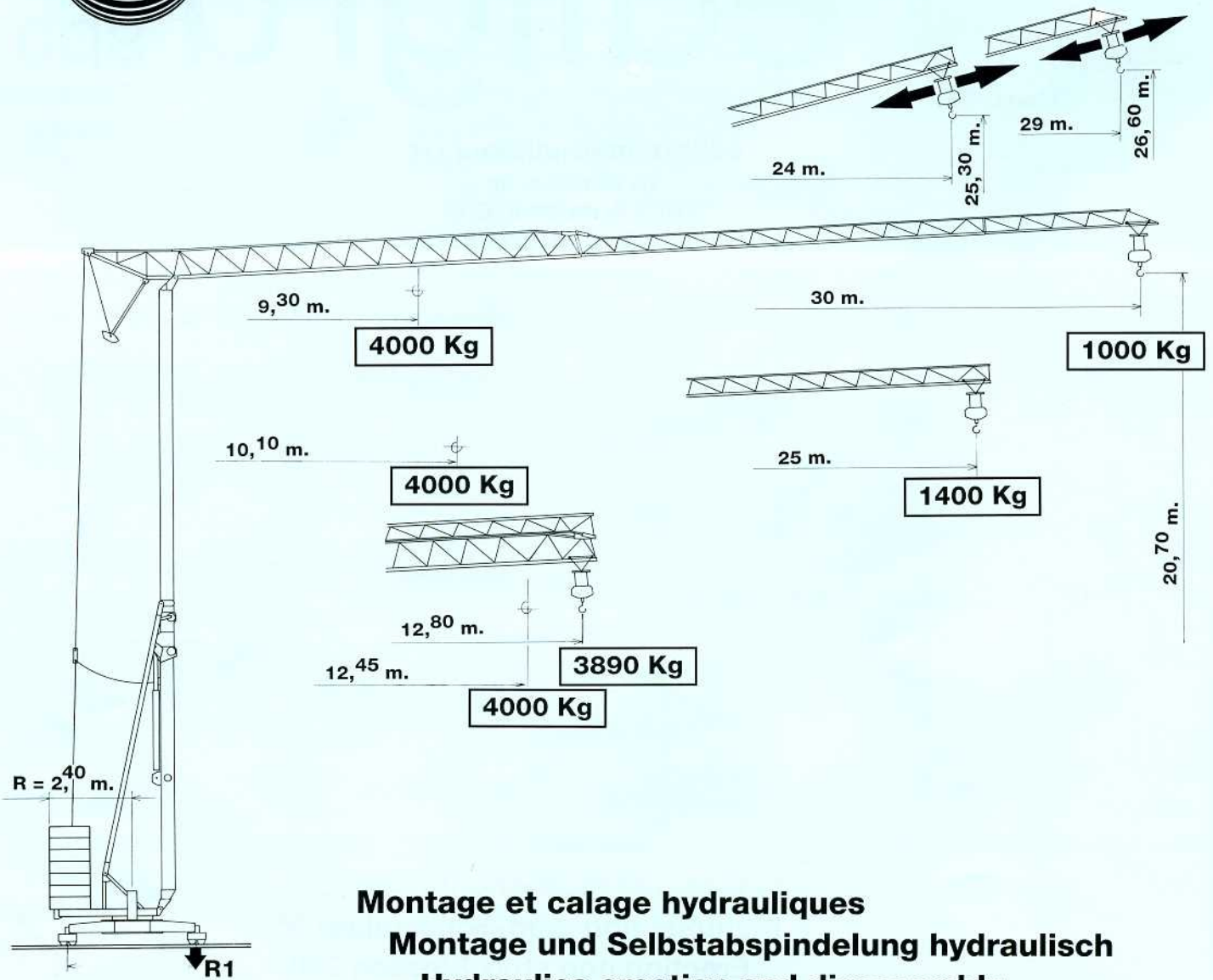
Tower and jib galvanized

Torre e braccio zincati

M.H. TURBO 30



M.H. TURBO 30

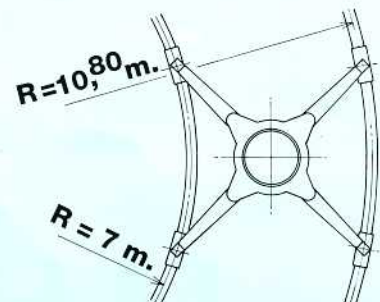
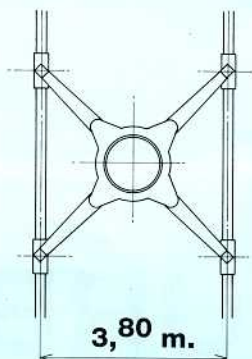
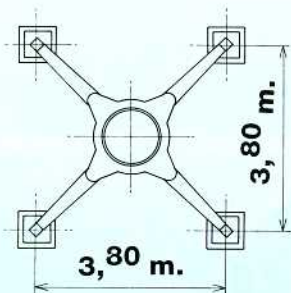


Montage et calage hydrauliques
Montage und Selbstabspindelung hydraulisch
Hydraulics erection and disassembly
Montaggio e smontaggio idraulici

Version sur vérin
 Ausführung Abstützspindeln
 Jacks version
 Versione su stabilizzatori

Version voie droite
 Ausführung gerade Schienenbahn
 Straight track version
 Versione traslazione diritta

Version voie courbe
 Ausführung kurven Schienenbahn
 Curved track version
 Versione traslazione curva



Réactions - Eckdrücke - Reactions - Reazioni

R1

● 18900 da N

■ 14400 da N

● En service

● In Betrieb

● In service

● In servizio

■ Hors service

■ Ausser Betrieb

■ Out of service

■ Fuori servizio

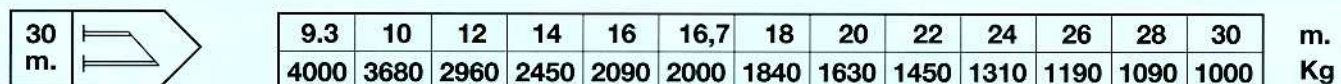
 Poids de construction sans essieux - Konstruktionsgewicht ohne Transportachse -
 Dead weight without transport axles - Peso della gru senza assali

Kg. 10700

Poids du lest - Ballastgewicht - Ballast weight - Peso zavorra rotante

Kg. 19300

Courbes de charges - Lastkurven - Load curves - Curve di carico


 Flèche relevée - Ausleger in Steilstellung
 Luffing jib - Braccio impennato

1000 kg cost.

Mécanismes - Antriebe - Mechanisms - Meccanismi

| | | | m/min. | kg | CV - PS hp | Kw |
|--|--|--|---|------|----------------------|---------|
| Levage Heben Hoisting Sollevamento | | | 6 | 2000 | 3 | 2,2 |
| | | | 24 | 2000 | 12 | 8,8 |
| | | | 48 | 1300 | 14 | 10,3 |
| | | | 3 | 4000 | 3 | 2,2 |
| | | | 12 | 4000 | 12 | 8,8 |
| | | | 24 | 2600 | 14 | 10,3 |
| Distribution - Katzfahren Trolleying - Carrello | | | 20/40 | | 1,5/3 | 1,1/2,2 |
| Orientation - Schwenken Slewing - Rotazione | | | 0,2/0,95 tr/min - U/min rpm - g/min | | 3,5 da N m kgm | |
| Translation - Kranfahren Travelling - Traslazione | | | 30 | | 2 x 1,5 | 2 x 1,1 |

 Puissance électrique nécessaire
 Anschlusswert
 Necessary electric power
 Potenza elettrica necessaria

 380 V
 50 Hz

 Réseau - Netzstrom
 Mains supply - Potenza

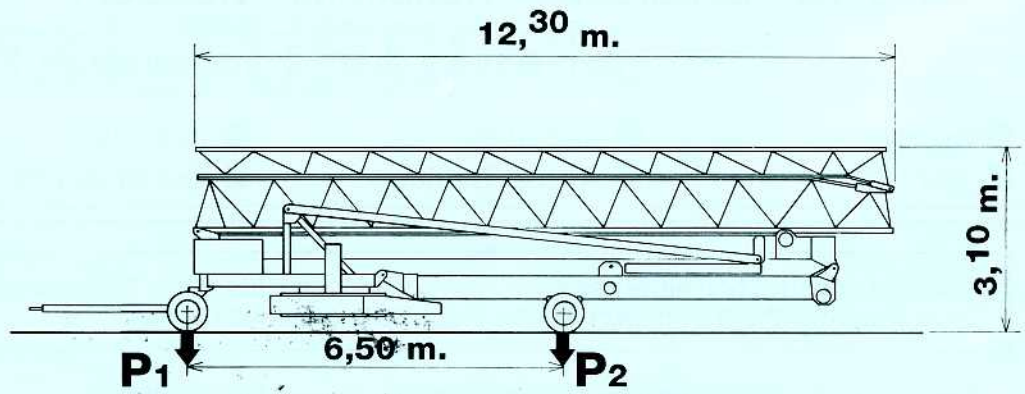
20 KVA

 Groupe électrogène
 Stromaggregat
 Generator set
 Gruppo elettrogeno

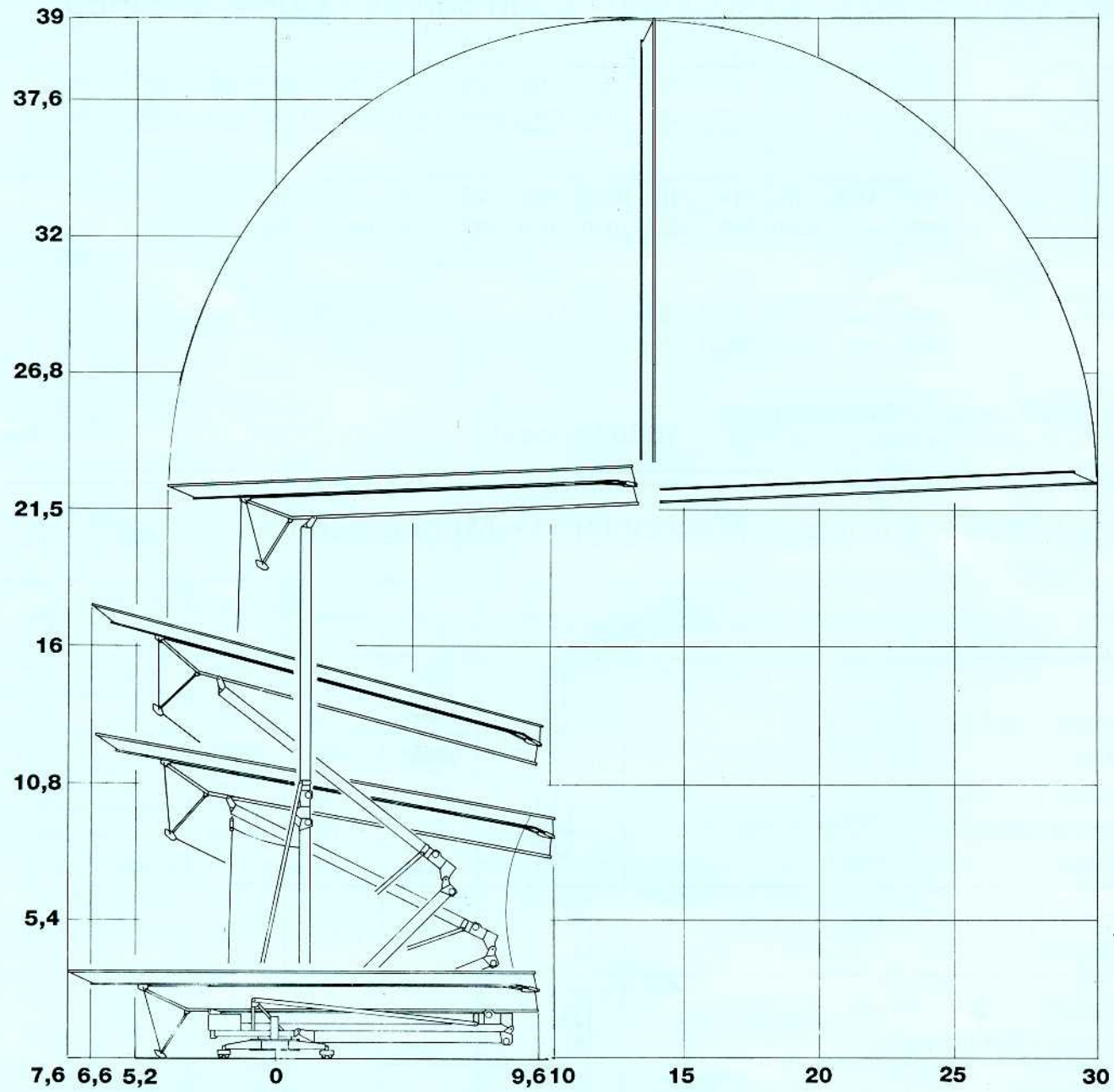
 Nous consulter
 Auf Anfrage
 Consult us.
 Consultarci

Mode de transport - Transportart - Kind of transport - Soluzione di traino

| | |
|-----------------------------|-------|
| P₁ - kg | 6500 |
| P₂ - kg | 9000 |
| P_{Tot} - kg | 15500 |



Montage - Montage - Erection - Montaggio



sede e stabilimento
 via guida - 26015 soresina (cr) Italy
 tel. 0374/344391 (4 linee ric. autom.)
 telefax 0374/341541
 EDILGRU - SORESINA
 telex 312088 edilgru I

